

TC22/TC27 Mobile Computer

The ultimate cost-effective tool for small business — with big business features



Table of Contents



Device Overview

Meet the TC22/TC27 Mobile Computer

Introducing the TC22/TC27, the smarter alternative to using a consumer smartphone in your business. These enterprise devices deliver the best of all worlds — smartphone styling and pricing, with big business features that boost productivity and customer service quality. With a TC22/TC27 in hand, workers are empowered to complete tasks faster and get more done in a day — giving you the tools needed to compete with any size business.



* TC22 with 3800mAh battery

Industry giants use the latest enterprise mobile devices to give workers a competitive edge — but the smartphones in your budget don't offer the features you need. **Meet the equalizer.**



Power all your apps — simultaneously

Next generation Qualcomm® platform

See more and scroll less

Large 6 in. Full HD+ with 450 Nits

The latest wireless technologies

Get the speed and power of 5G and Wi-Fi 6/6E*

Choice of two integrated scanners

Choose standard or advanced range scanning to capture barcodes in hand and on the highest warehouse shelf

Built-in durability to last for years

Waterproof, dustproof and drop-proof — even on concrete

Designed for all-day comfort

Well-balanced design created by Zebra's award-winning ergonomic experts provides comfort for any size hand

Ready for any NFC application

Read tickets, loyalty cards and more in digital wallets, integrate with your existing POS contactless solution for tap-to-pay, plus easy tap-to-pair

Add the functionality of five additional devices

The TC22/TC27 can turn into a workstation on demand, hybrid POS, PBX handset, two-way radio and RFID reader

* Wi-Fi 6E requires Mobility DNA Enterprise license.

Top 5 Reasons

...to choose TC22/TC27 over a smartphone

1

Built to outlast consumer devices

You want the most value out of your devices — and the TC22 and TC27 deliver. The durable specifications, simplified management, long product lifecycle, tools that boost productivity and business-class support services will cut your Total Cost of Ownership almost in half.¹

2

Loaded with business-class scanning features

Choose your range — standard or advanced range that can capture barcodes as far as 40 ft./12 m. Dedicated scan buttons enable easy one-handed operation. No need to line up the barcode and scanner with omni-directional scanning — just point and shoot. Capture virtually any barcode in any condition in a split second. The result? Workers can capture barcodes in nearly half the time, with half the muscle work, increasing comfort and productivity.²

3

Power every minute of every workday

Choose from a standard single shift battery or an extended multi-shift battery. Since the batteries are removable, workers are never out of power — and you never need to take the TC22/TC27 out of service for charging.

4

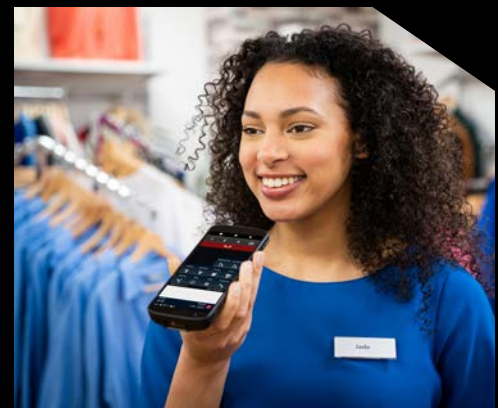
The wireless speeds your business needs

Devices can only function as fast as their wireless connections allow — and with support for all of today's fastest wireless networks, the wireless connection won't slow you down. The TC22/TC27 supports 5G, Wi-Fi 6/6E, private 5G and CBRS private 5G and 4G LTE networks.³

5

You get more for your money

When it comes to total value, consumer phones lose. You can add the functionality of five additional devices — a two-way radio, a PBX handset, a workstation, an RFID reader and a hybrid Point-of-Sale you can set up anywhere. And with Mobility DNA Professional, you get powerful software tools to increase device security and simplify deployment, everyday device management and data capture — all at no cost.



1. Enterprise Mobility Total Cost of Ownership; From the Expected to the Unexpected: Uncovering the True Costs of Mobile Solutions for Frontline Mobile Workers; VDC Research, 2021.

2. White Paper: Is Camera Scanning Negatively Affecting Your Business; Zebra Technologies; June 2022

3. US Only



With the TC22 and TC27, your business is ready for the **world of contactless transactions** ...right out of the box.

While payment cards are one of the top reasons your customers carry a mobile wallet, there's a world of non-payment related items in those mobile wallets too — from loyalty cards and coupons to parking passes, train passes and tickets. When your customers walk into your business, they expect you to accept everything in their mobile wallets. And with the TC22/TC27, you can.

You get built-in support for Apple VAS and Google Smart Tap right out of the box, with split-second fast and accurate reading times to keep lines moving.




Mobility DNA Professional

Your mobile computer's built-in advantage


Professional no-cost ready-to-use toolkit — only from Zebra

Increase the productivity of your workforce and device value with no-cost Zebra **Mobility DNA Professional** tools.

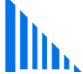
Want more? Purchase the **MDNA Enterprise license** for additional tools that make Zebra devices even easier to use and manage.




Mobility Extensions (Mx)
Increase device and data security




StageNow
Stage devices with your apps and settings in seconds




DataWedge
Capture and send barcode data right to your apps, right out of the box




Enterprise Home Screen
Choose the apps and features you want users to access




GMS Restricted Mode
You decide which GMS apps and services to enable on your devices




OEM Config
Enable your EMM to support even the newest features in your devices



RxLogger
Collect targeted diagnostic data for easy troubleshooting



Device Diagnostics
Determine if device issues can be fixed onsite with the press of a button



Enterprise Mobility Development Toolkit
Easily create apps that use all the features in your devices

A full portfolio of services

From everyday support to analytics that enable proactive device management to convenient on-device video training

Manage and Support: Zebra OneCare™ Special Value

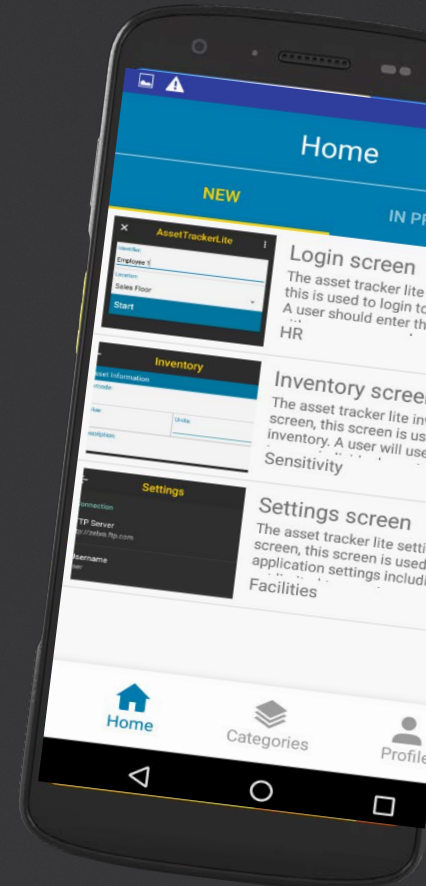
Keep your TC22 and TC27 devices up and running and avoid unexpected repair costs with this affordable service plan which covers wear and tear, priority 8x5 local time live-agent technical support, an at-a-glance dashboard to manage it all and more.

Train and Adopt: Video on Device

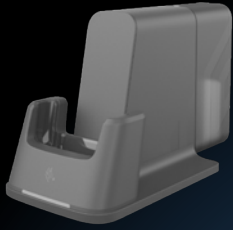
Make short easy-to-follow how-to videos on your TC22/TC27 devices to put on-the-job learning and support right at your workers' fingertips.

Actionable Intelligence: VisibilityIQ Foresight™

Proactively spot and address issues gleaned from information on Zebra mobile computers, printers, scanners and batteries — before they impact your business.



The TC22/TC27 business-class accessories



Workstation/POS cradle

Turns the TC22/TC27 into a workstation or hybrid or fixed POS station



Attachable trigger handle

Rapid fire scanning and added comfort for scan-intensive applications



RFD40 eConnex RFID sled

Create a lightning-fast standard range UHF RFID reader with this rugged sled



2-slot cradle

Charge one mobile computer and one spare battery simultaneously



Multiple charging options

Single and multi-slot cradles for the backroom; multi-slot spare battery chargers



Protective boot

Increase the drop spec to 5 ft./1.5 m for more rugged environments



Wearable arm mounts

Choose from two adjustable arm mounts for instant hands free freedom — velcro or BOA

Carrying and USB charging options

Choose the holster or handstrap to make carrying easier. The USB charger enables easy charging anywhere — plug in any standard outlet to charge with USB-C power supply and USB-C power cable — or charge in any vehicle with the USB-C cable.



NA and Corporate Headquarters
+1 800 423 0442
inquiry4@zebra.com

Asia-Pacific Headquarters
+65 6858 0722
contact.apac@zebra.com

EMEA Headquarters
zebra.com/locations
contact.emea@zebra.com

Latin America Headquarters
zebra.com/locations
la.contactme@zebra.com