



SEE MORE. DO MORE.

DISMANTLING AND TREATMENT INFORMATION

Sensor with Omni Antenna UWC-1300-A-0xxx

Conforms to **Waste electrical and electronic equipment (WEEE)**
2002/96/EC

Category 3 product according Annex IA

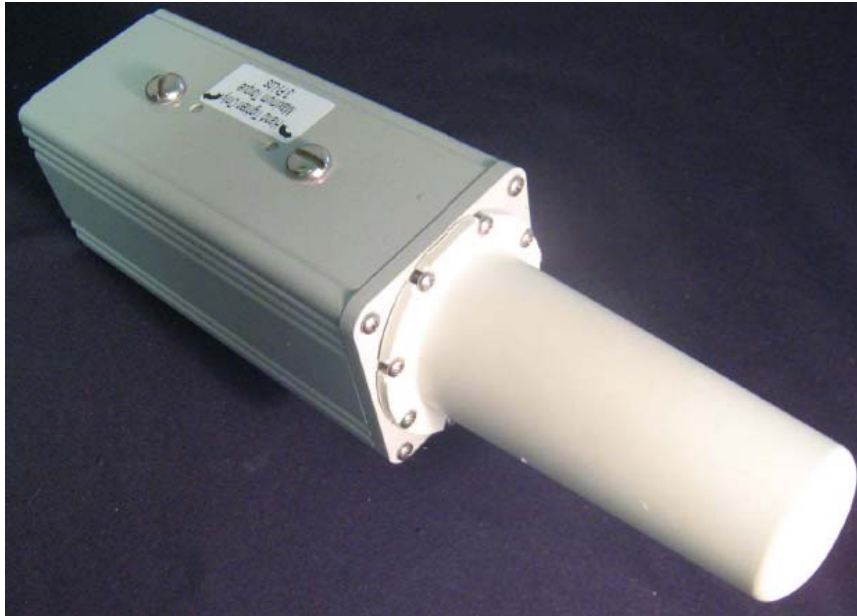
Date: 20 October 2011

Zebra Technologies
2940 North 1st Street
San Jose, CA 95134
www.zebra.com

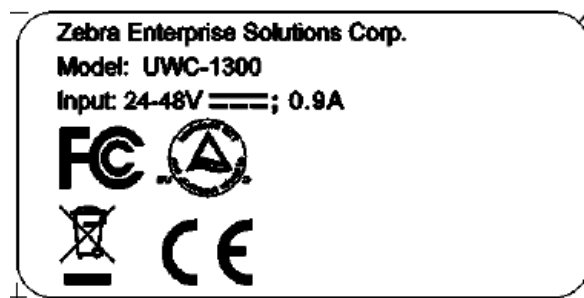
Reuse and treatment information

Material	Weight [g]	Weight [%]	Important Information
Waste Disposal (WD)			
Ceramic	0	0	
Subtotal	0	0	
Recovery Operations (RO)			
Leather	0	0	
Rubber / elastomere	1.81	.3	
Sealant compound	0	0	
Foam	0	0	
Wood	0	0	
Subtotal	0	0	
Aluminium alloy cast			
Aluminium alloy cast	387.19	69.6	
Aluminium alloy wrought	0	0	
Battery	0	0	
Cable	0	0	
Cable with plug	14	2.5	
Carton	0	0	
Copper	0	0	
Copper Alloy	0	0	
Gas	0	0	
Glass Optical	0	0	
Iron	0	0	
Liquid	0	0	
Magnesium alloy	0	0	
Magnetic material	0	0	
Metal nonferrous	0	0	
Paper	0	0	
Plastic	40.8	7.3	
Plug	0	0	
Printed circuit board	96.2	17.4	Remove printed circuit boards (2) from the Assembly and (2) from the Antenna
Sintered material	0	0	
Steel	0	0	
Steel stainless	16	2.9	
Textile material	0	0	
Subtotal	0	0	
Re-Use (RU)			
Subtotal	0	0	
Total weight	556 g	100%	

Product identification and selective treatment information



63.50 mm Width x 63.5 mm Height x 254.0 mm Long

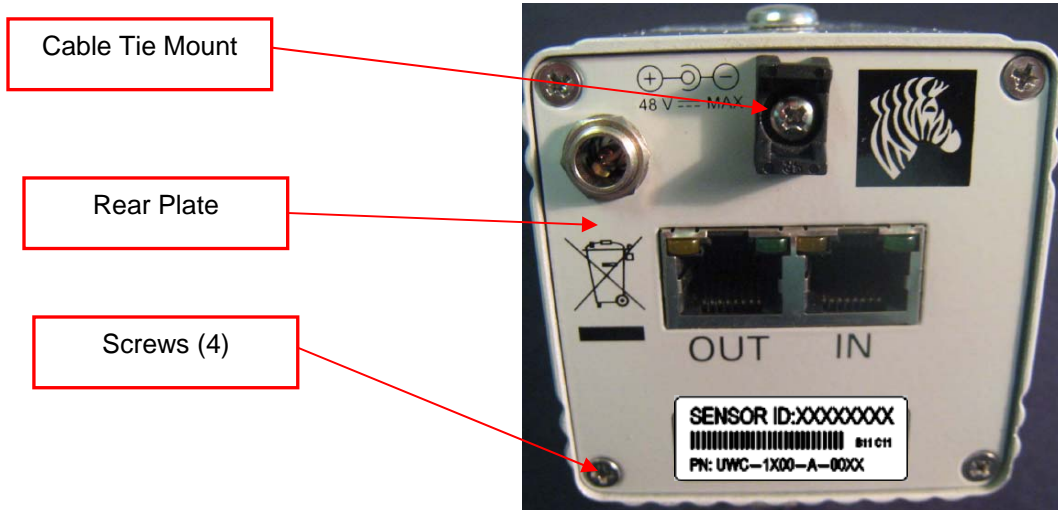


Product Description:

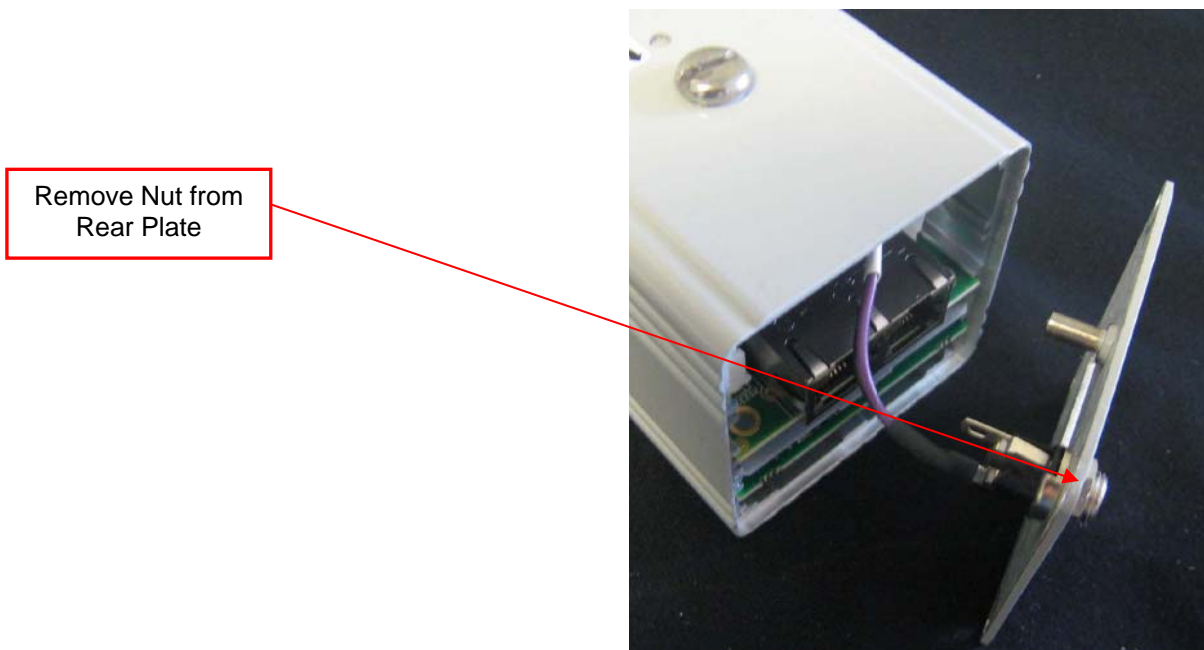
Dart sensors are placed throughout the site originating from the hub and then typically daisy-chained from one sensor to the next. The Dart portfolio offers three standard integrated sensors (High-gain, Mid-gain and Omni) which in combination provides industry-leading range and flexibility which translates to the minimal infrastructure required to achieve the high-level UWB location accuracy.

Dismantling Instructions

A) Remove the Cable Tie Mount by unscrewing one screw. Remove Rear Plate by unscrewing four screws as follows:

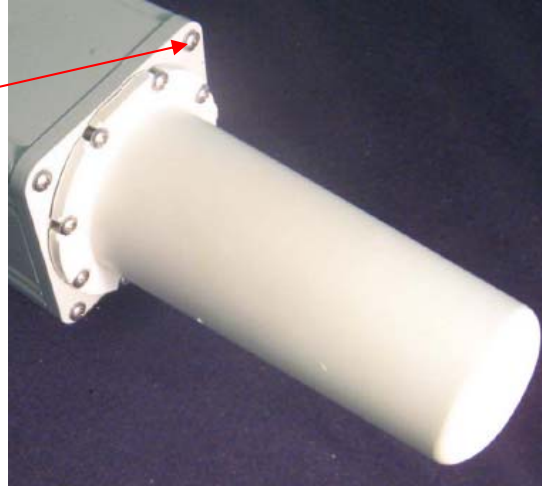


B) Remove Cable Assembly by removing nut as follows:



C) Remove Omni Antenna by unscrewing four screws as follows:

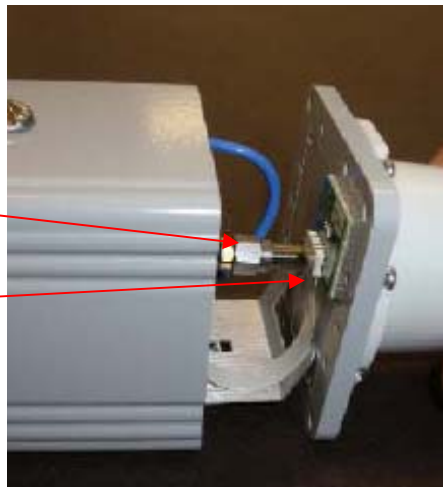
Screws (4)



D) Complete the removal of the Bulkhead by unscrewing the RF Cable and then pulling the Antenna ID Cable from the Antenna Connector.

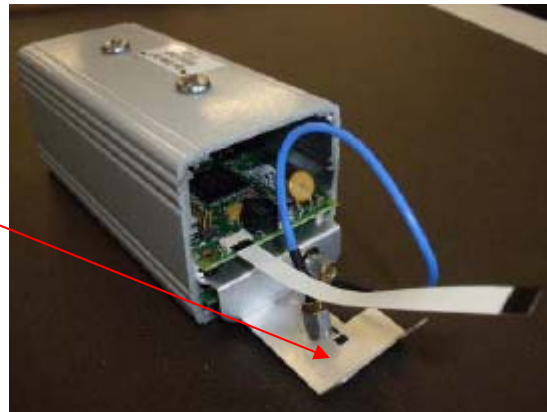
Pull the Antenna ID Cable Out

Unscrew the RF Cable



E) Pull remaining items from the housing by pulling on the Metal Bracket as follows:

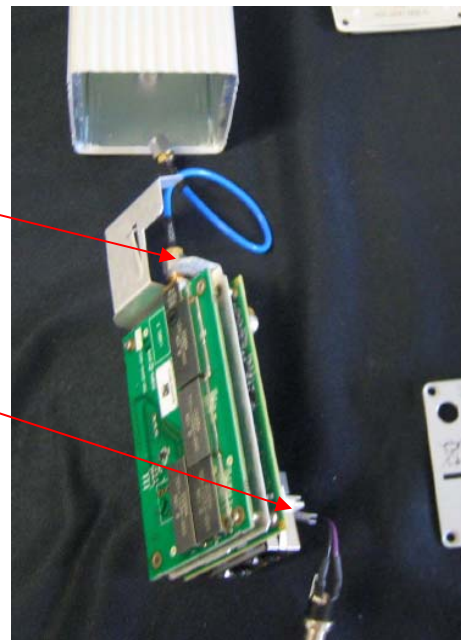
Pull on the Metal Bracket



F) Remove two Cable Assemblies from the PCBA's. One Cable Assembly will be removed by unscrewing. The other is removed by placing a tool between the Cable Assembly and the Connector locking tab then pull on the connector to remove.

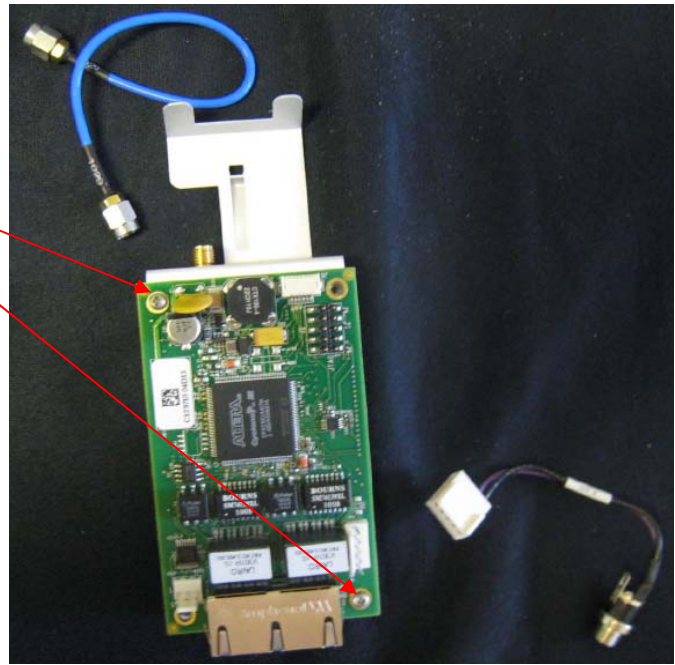
Unscrew Cable Assembly

Remove Cable from Connector



G) Remove the top Printed Circuit Boards (PCBA's) from the metal bracket by unscrewing two screws then pull the PCBA from the connector.

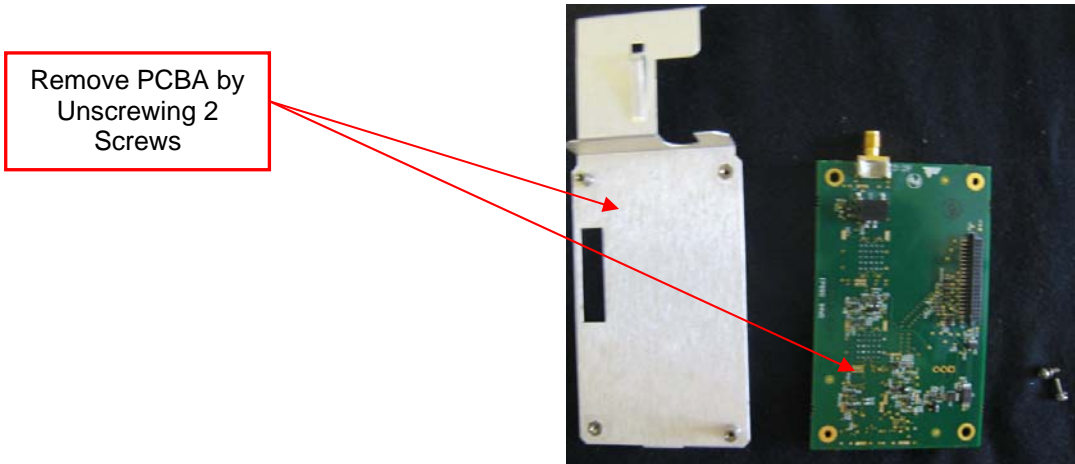
Remove PCBA by
Unscrewing 2
Screws



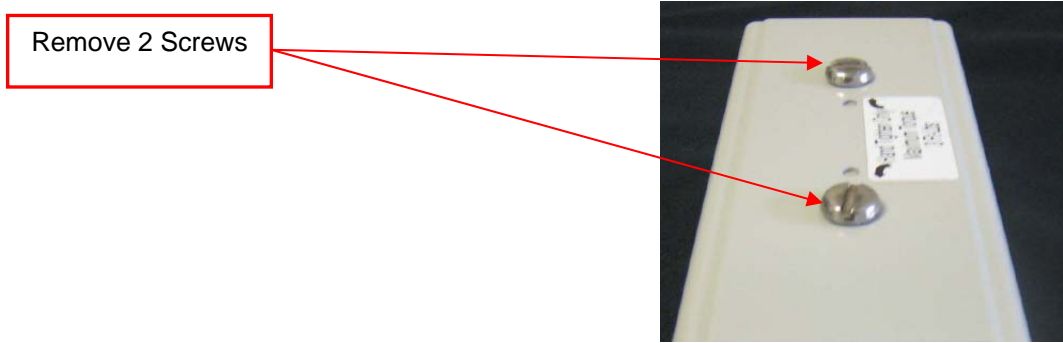
H) Picture of the assembly when two screws were removed and the PCBA pulled from the metal bracket:



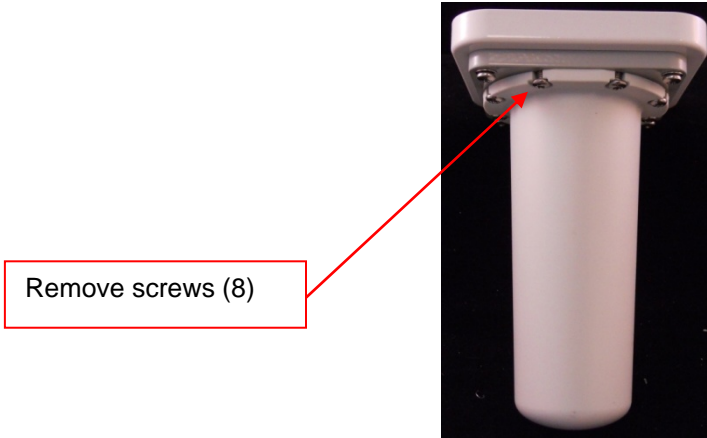
I) Turn the assembly over and remove the remaining PCBA from the metal bracket by unscrewing two screws:



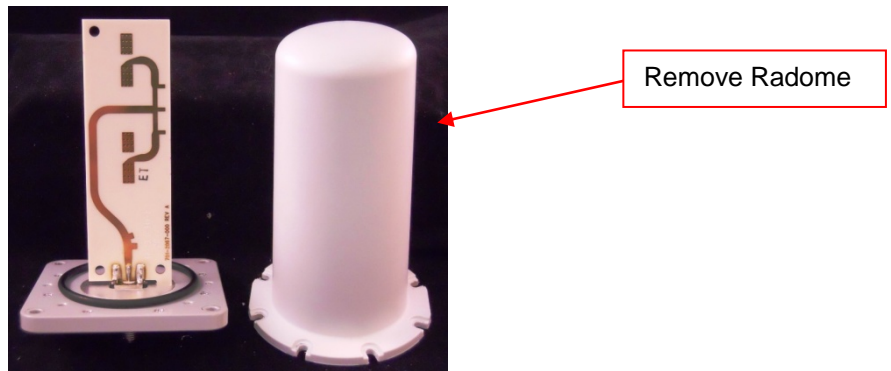
J) Remove two screws from the Housing as follows:



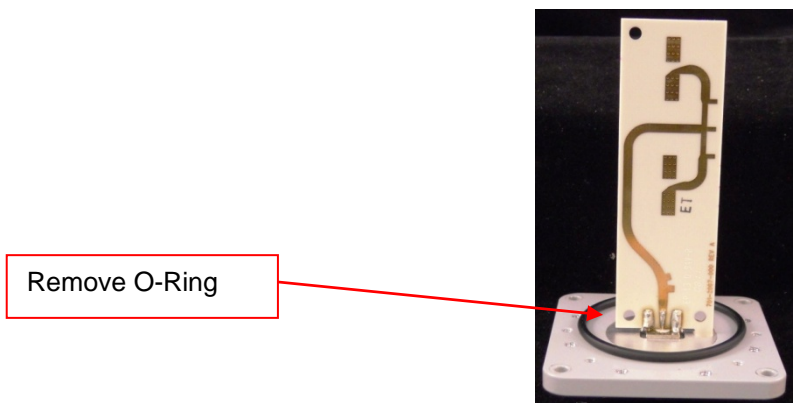
K) Remove eight (8) screws around the Radome.



L) Remove the Radome from the plate.



M) Remove the O-Ring from the Plate.



N) Remove the Nut from the backside of the Plate, and then remove the Antenna Assembly. Remove the PCBA from the antenna by prying between the PCBA and the Antenna Plate.

Remove PCBA
from Antenna Plate

Remove nut and
lock washer

